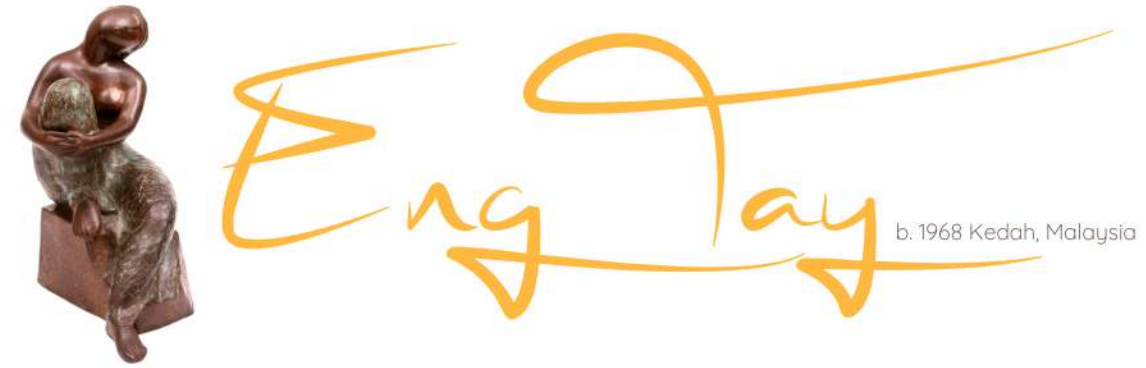




Art WeMe  
Contemporary Gallery  
唯美艺术画廊

Angela etchings





Eng Tay was born and raised in Kedah, Malaysia. In 1968 he moved to New York City to study at The Art Students League, followed by graduation from The School of Visual Arts in 1972 as a graphic designer. He worked in the graphic arts field until 1978, when he undertook several painting trips though out South America and Indonesia until 1980.

Most of Eng Tay's work has found its greatest expression when addressing the concept of family – the poetry of the family, of man and woman, of children, of friendship, of music and of the natural world. Eng Tay still lives in New York City and travels extensively. He continues to paint, sculpt and make etchings at his TriBeCa studio.

Eng Tay 出生於马来西亚吉打州。1968 年他搬到美國纽约市並且在 The Art Students League 学习，随后進入紐約视觉艺术学院 (School of Visual Arts, NYC) 在毕业後成为一名平面设计师，一直到 1978 年。之后便专注于艺术创作直至今日。

Eng Tay 的大部分作品围绕在家庭概念—以诗意的表现手法歌颂着家庭、男人和女人、孩子、友谊、音乐和自然世界。目前 Eng Tay 仍居住在纽约并往来世界各地旅行。他在他位于纽约Tribeca的工作室持续绘画、雕塑与蚀刻版画的创作。





# Eng Tay

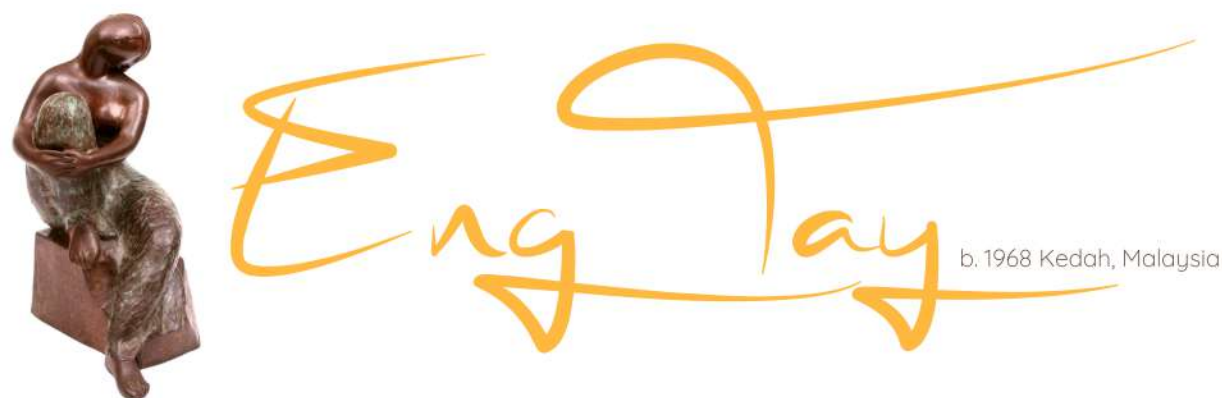
b. 1968 Kedah, Malaysia

New York-based Malaysian artist Eng Tay is best known for gentle and round shape figure artworks that presented in diverse media including limited edition etchings, paintings, sculptures and works on paper. Figures are arranged in scenes of ordinary life including people play instruments together and neighbours' chit-chat in streets and markets as well as scenes of family gathering. All little things that happen in daily turn into Eng Tay's narrative paintings in a way of gentle and impressive expression, telling beauty of human relationship that Eng Tay found in daily routines.

Eng Tay was born in 1947 in Kedah, West Malaysia. In 1968, he moved to New York City and studied at the Arts Student League, School of Visual Arts and Pratt Graphics Center. Here he studied graphic design, painting and printmaking. He worked in the graphic arts field until 1978, when he undertook several painting trips throughout South America and Indonesia.

长时间在纽约发展的马来西亚艺术家 Eng Tay 以圆润形象的人物作品而闻名，并呈现在多样的艺术媒材中如限量版版画、绘画、雕塑和纸上作品。人物被安排在日常生活的场景中包括人们一起演奏乐器以及邻居在街道和市场上闲聊，另外也有很多作品呈现家庭聚会的场景。日常生活中发生的一切小事，都以一种温和而令人印象深刻的表达方式变成了Eng Tay的叙事画，讲述了Eng Tay在日常生活中发现的人和之美。





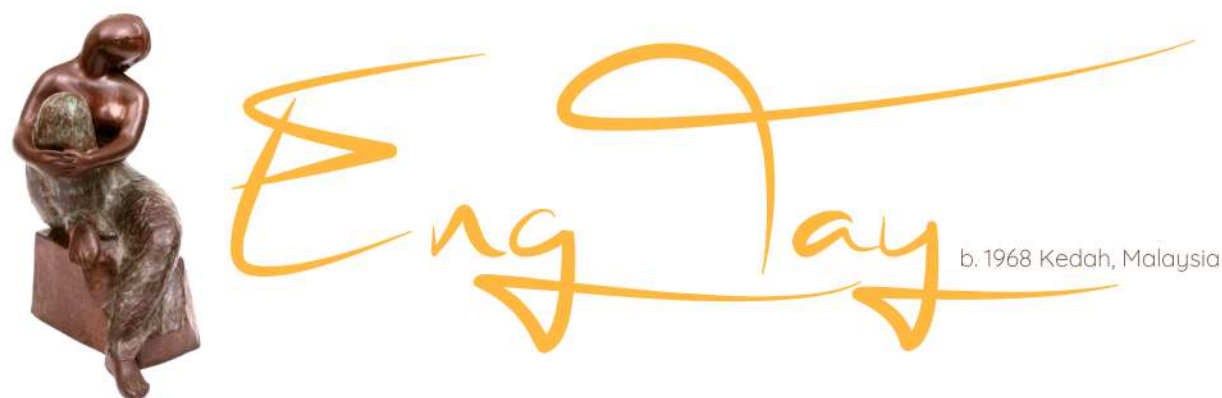
## SELECTED SOLO EXHIBITIONS

- 2015 Art Accent Gallery, Kuala Lumpur, Malaysia
- 2014 Adam Gallery, Singapore
- 2011 Art Accent Gallery, Kuala Lumpur, Malaysia
- 2009 Galeri Petronas, Kuala Lumpur, Malaysia
- 2007 The Harrison Gallery, MA  
Westville Gallery, CT  
Artfolio Gallery, Singapore  
Art Salon @ Seni, KL, Malaysia
- 2006 Bidadari Gallery, Bali  
Canna Gallery, Indonesia
- 2006 Midday Gallery, Englewood, New Jersey
- 2006 "Kiaraville", KL, Malaysia



- 2005 Artfolio, Singapore  
Galerie Sono, South Norwalk, CT.  
Kiaraville, Malaysia
- 2004 Galeri Citra, Kuala Lumpur, Malaysia  
Galeri DuMonde, Hong Kong, China  
Multiple Impressions, New York City, NY
- 2003 Canna Gallery, Indonesia  
Galerie Sono, South Norwalk, CT
- 2002 Galerie Sono, South Norwalk, CT  
Galerie West, West Hampton Beach, NY  
Multiple Impressions, New York, NY
- 2001 The Air Gallery, London, UK  
Midday Gallery, Englewood, NJ  
Galerie Du Monde, Hong Kong
- 2000 Artfolio, Singapore  
Morningside Gallery, Albany, NY  
Multiple Impressions, New York, NY  
P & C Art, Fairfax, VA  
Gallery 44, Ellicott City, MD





b. 1968 Kedah, Malaysia

## Public Sculptures

"Kiaraville" Complex, Condominium, Kuala Lumpur,  
Malaysia

Pantai I-Zen, Condominium, Kuala Lumpur, Malaysia

Marc Residence, Condominium, Kuala Lumpur,  
Malaysia

## Group Exhibitions

2022 Affordable Art Fair Singapore

2023 ONE ART Taipei, Metropolitan Premier Taipei Hotel,  
Taipei, China



## Public Collections

Dewan Filharmonik Petronas, Kuala Lumpur

Hong Leong Group, Kuala Lumpur

Hyatt Regency, Singapore

Raffles City, Singapore

Fukuyama Museum of Art, Hiroshima Japan

Alor Setar Art Museum, Kedah, Malaysia

Taipei Fine Arts Museum, Taiwan

New York University Department of Anthropology, NY

Development Bank of Singapore, Singapore

United States Embassy to Malaysia, Kuala Lumpur

Mallone & Hyde, Memphis, Tennessee

Frankie Valli Estate, Boca Raton, FL

Merv Griffin Estate, Bahamas

National Art Gallery, Kuala Lumpur, Malaysia

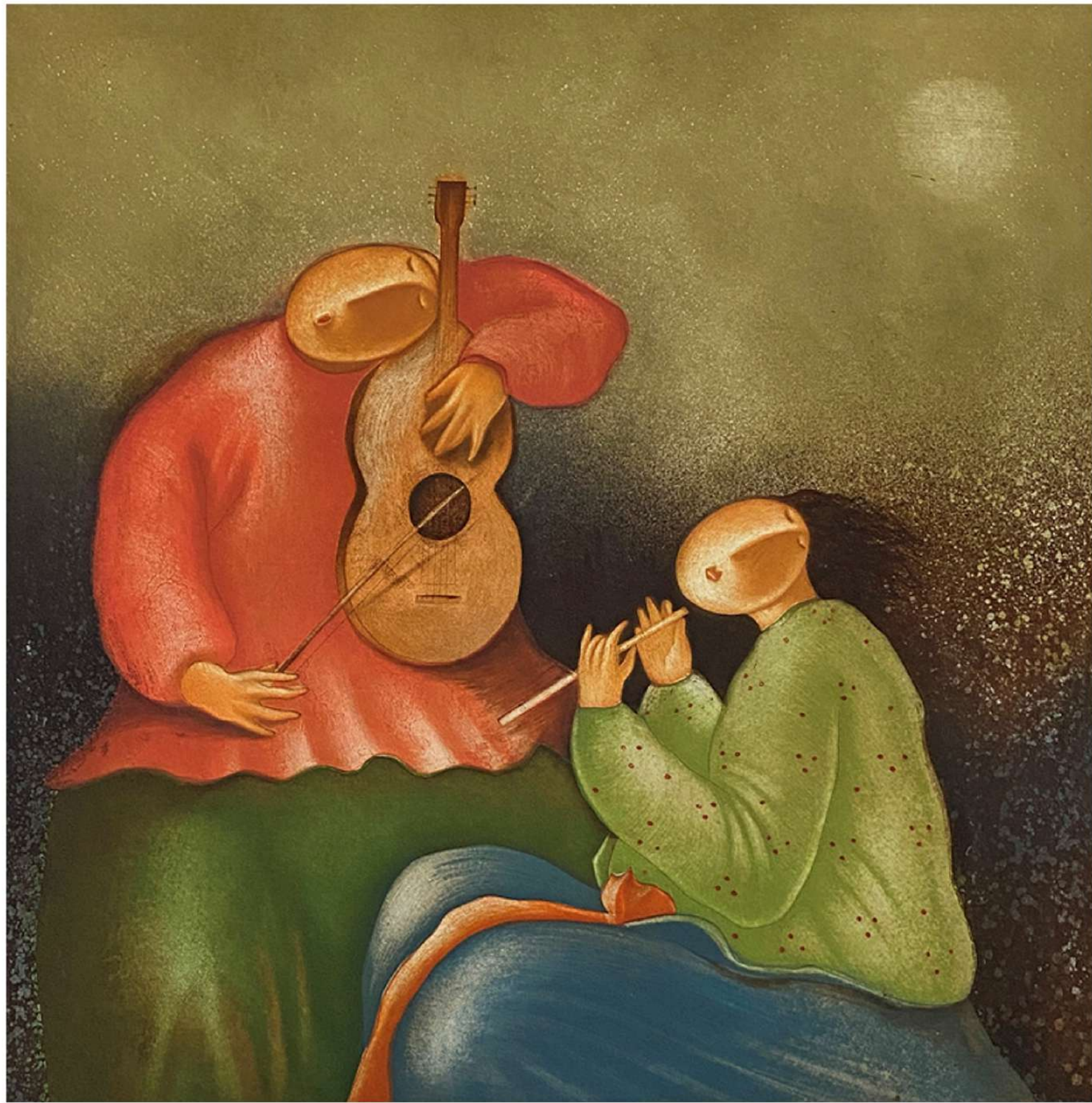


# W O R K S

*etchings*

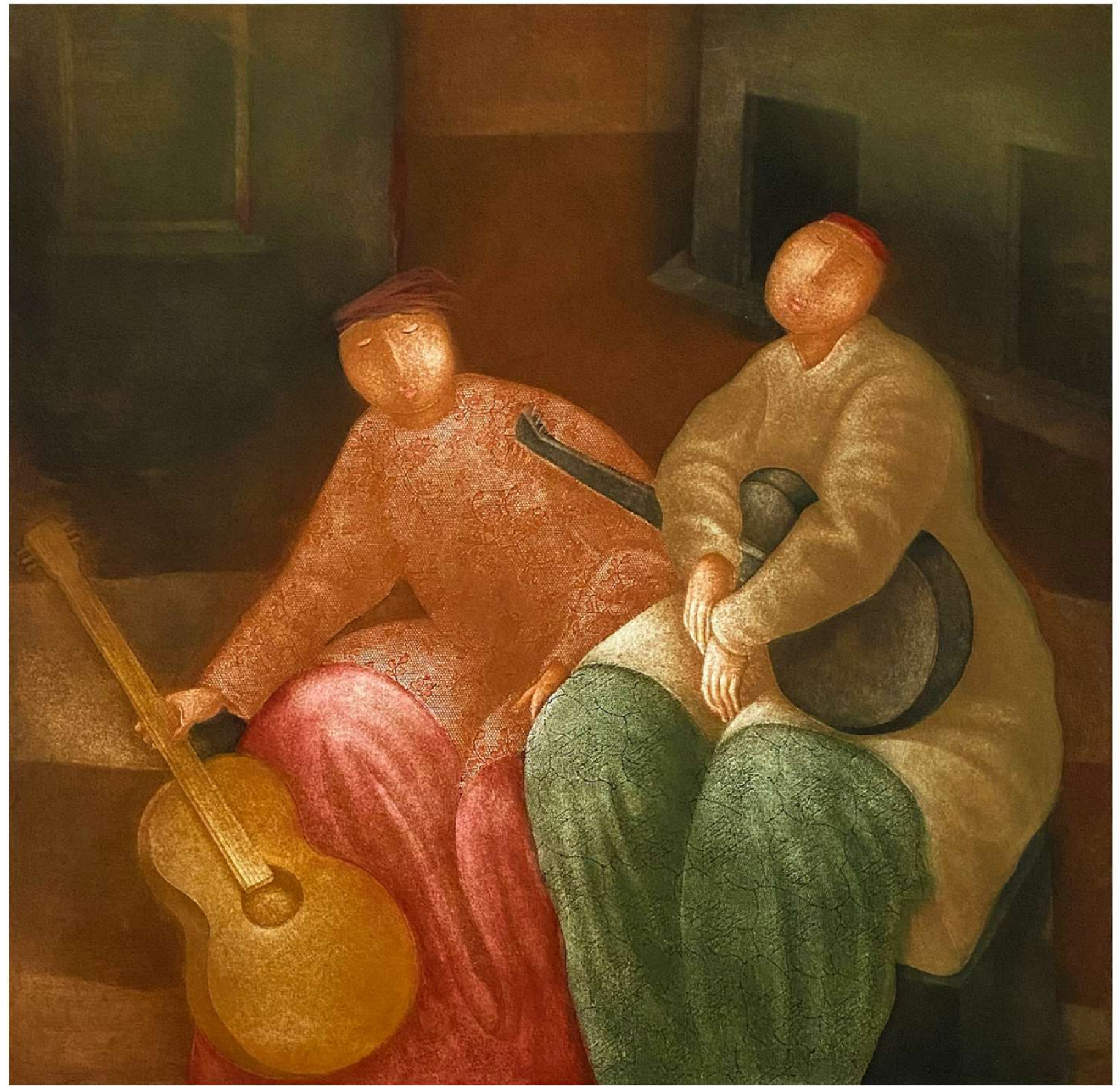






**Duet**

72 x 69.5cm, etching on paper, edition 89 of 175, 1991



**Mellow Moment**

84.5 x 76.5cm, etching on paper, edition 11 of 175, 2004





**Winter Melody**  
79.5 x 76.5cm, etching on paper, edition 111 of 150, 1990



**Spring Melody**  
79.5 x 76.5cm, etching on paper, edition 141 of 150, 1989





**Autumn Melody**

83 x 76cm, etching on paper, edition 131 of 150, 1989



**Happy Hours**

82 x 76.5cm, etching on paper, AP edition, 1992





**Serenade II**

76 x 96.5cm, etching on paper, edition 60 of 175, 1997





**Ceremony**

76 x 95cm, etching on paper, edition 29 of 175, 1997





**Beneath The Moon II**

76.5 x 97cm, etching on paper, edition 172 of 175, 1991





**Concerto  
(SOLD)**

77 x 96cm, etching on paper, edition 29 of 175, 2003

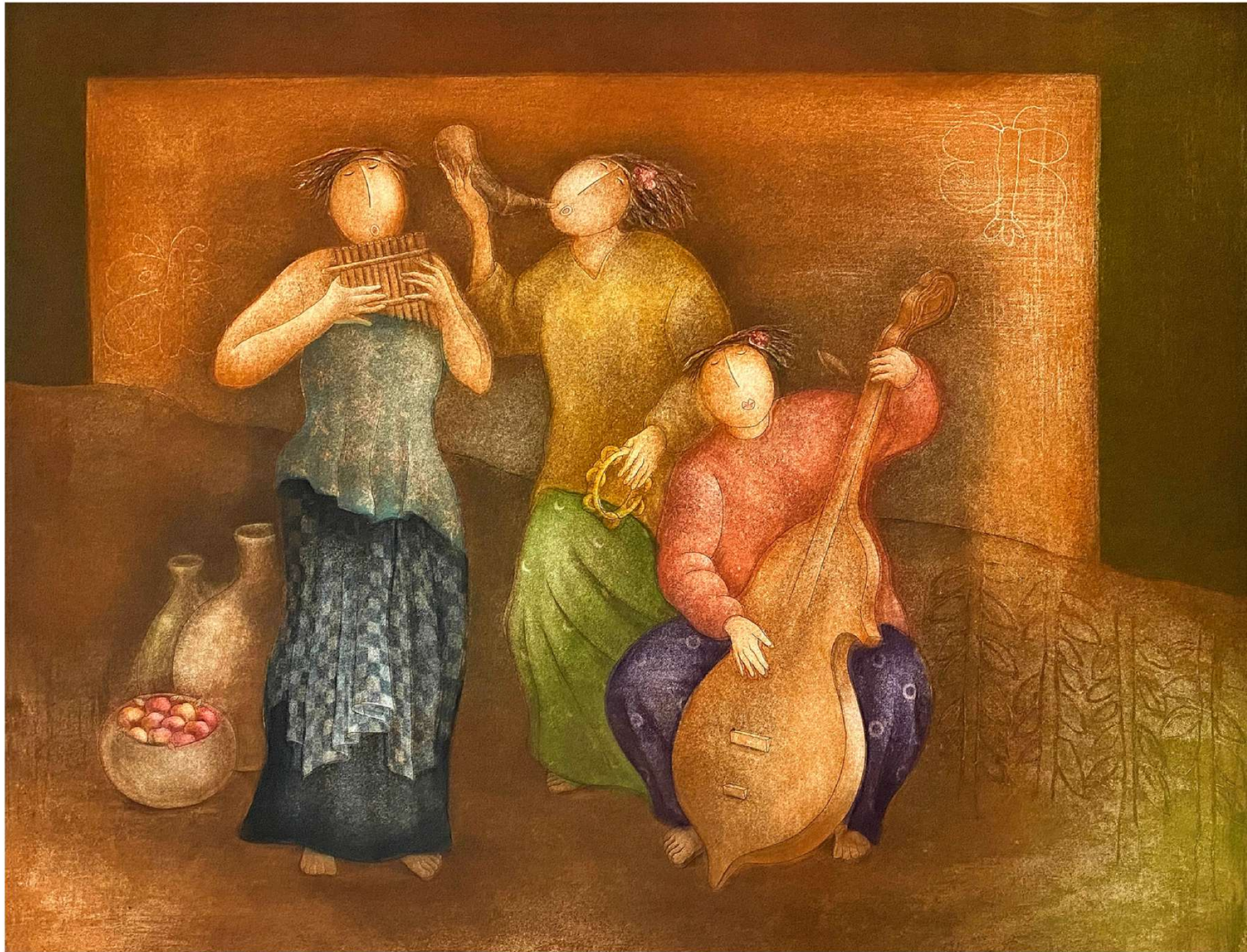




**Sound Of Dusk**

77 x 97.5cm, etching on paper, AP Edition, 2005





**Evening Melody**

77 x 96cm, etching on paper, edition 10 of 175, 2004





**Grace**

76.5 x 95cm, etching on paper, AP Edition, 1993





**Serene**

74.5 x 93cm, etching on paper, edition 17 of 175, 1997

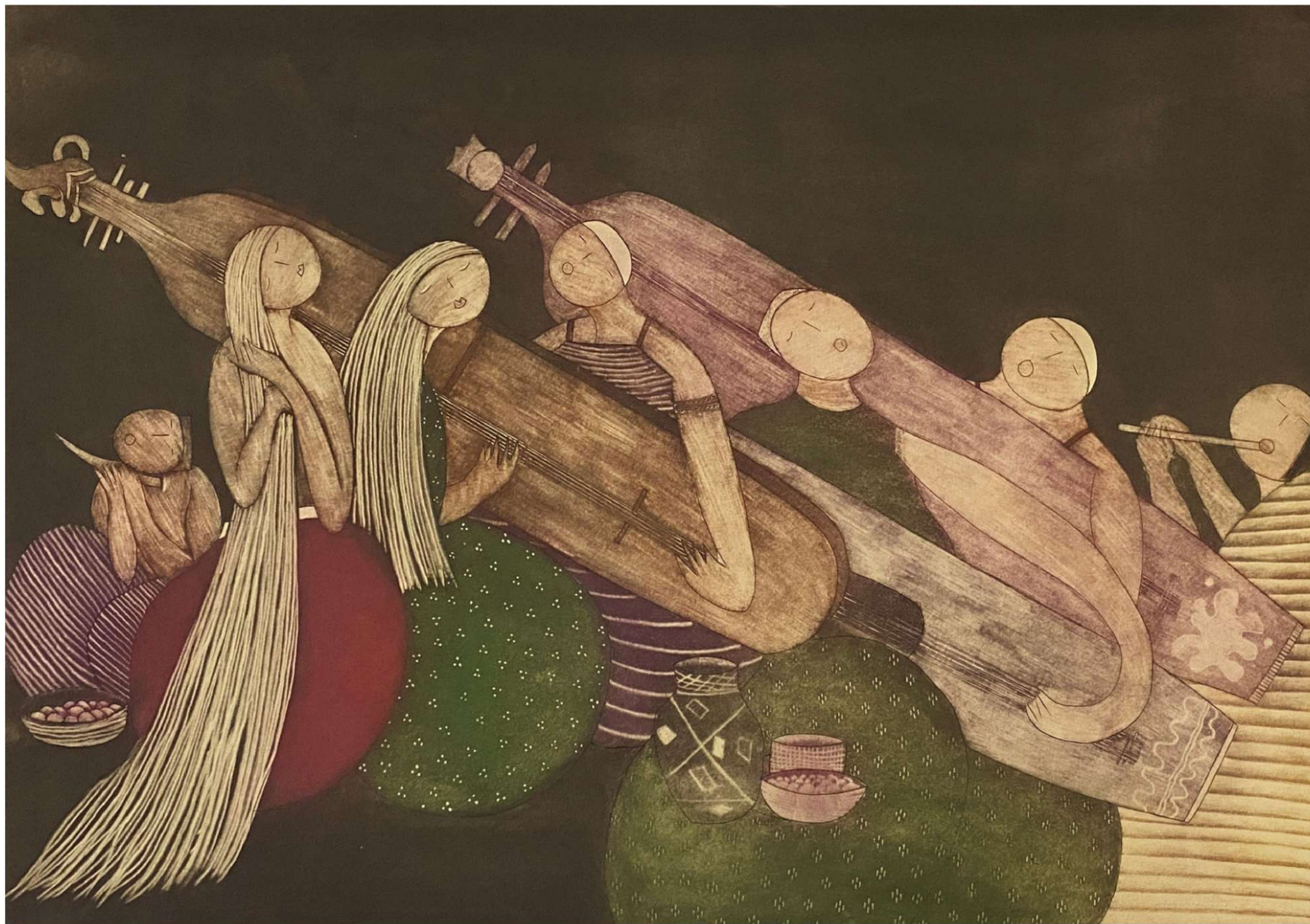




**Lover III**

76 x 94.5cm, etching on paper, AP Edition, 1990





**Unchanged Melody**

75.5 x 106cm, etching on paper, edition 83 of 125, 1984





**Ecstasy II**

76 x 107cm, etching on paper, edition 39 of 100, 1996





**Morning Gathering**

85 x 74.5cm, etching on paper, edition 13 of 175, 1955





**Summer Melody**

109 x 76cm, etching on paper, edition 92 of 150, 1989





**Art WeMe**  
Contemporary Gallery  
唯美艺术画廊

Art WeMe Contemporary Gallery features established and mid-career international artist. Based in Kuala Lumpur (Malaysia) with a gallery in Carmel-By-The-Sea (California, United States) and a consulting office in Singapore.

Art WeMe believes art exploration is an amazing journey that is both personal and engaging. Once embarked, the exciting journey provides us a boundless media to individualise our personal value, accomplishment and success. It's our vision to introduce art that adds great dynamism to various spaces: personal, home, work, and social. Whether you are just beginning to buy art or looking to add to your existing collection, the gallery's exquisite artworks will intrigue your imagination and interest.

唯美藝術畫廊以知名和處於職業生涯中期的國際藝術家為特色。總部位於吉隆坡（馬來西亞），在 Carmel-By-The-Sea（美國加利福尼亞州）設有畫廊，在新加坡設有諮詢辦公室。

唯美相信藝術探索是一段既個人化又引人入勝的奇妙旅程。一旦啟程，激動人心的旅程為我們提供了一個無限的媒介來個性化我們的個人價值觀、成就和成功。我們的願景是引入藝術，為各種空間增添活力：個人、家庭、工作、社交。無論您是剛剛開始購買藝術品還是想增加現有收藏，畫廊的精美藝術品都會激發您的想像力和興趣。





Art WeMe  
Contemporary Gallery

唯美艺术画廊



ARTSY



WEBSITE



FACEBOOK



INSTAGRAM

## ART WEME CONTEMPORARY GALLERY

MALAYSIA

Lot 2.100.00 & 2.101.00

166 Jalan Bukit Bintang,

Pavilion Elite,

55100 Kuala Lumpur

Operation Hours

Daily from 10am - 9pm

Including weekends and public holidays



+6 (03) 2110 6822



www.info@artweme.com