



江
石
文

**CHIANG
SHIH WEN**

D
CITY
N
A
M
/
C
S



Art WeMe
Contemporary Gallery

唯美艺术画廊

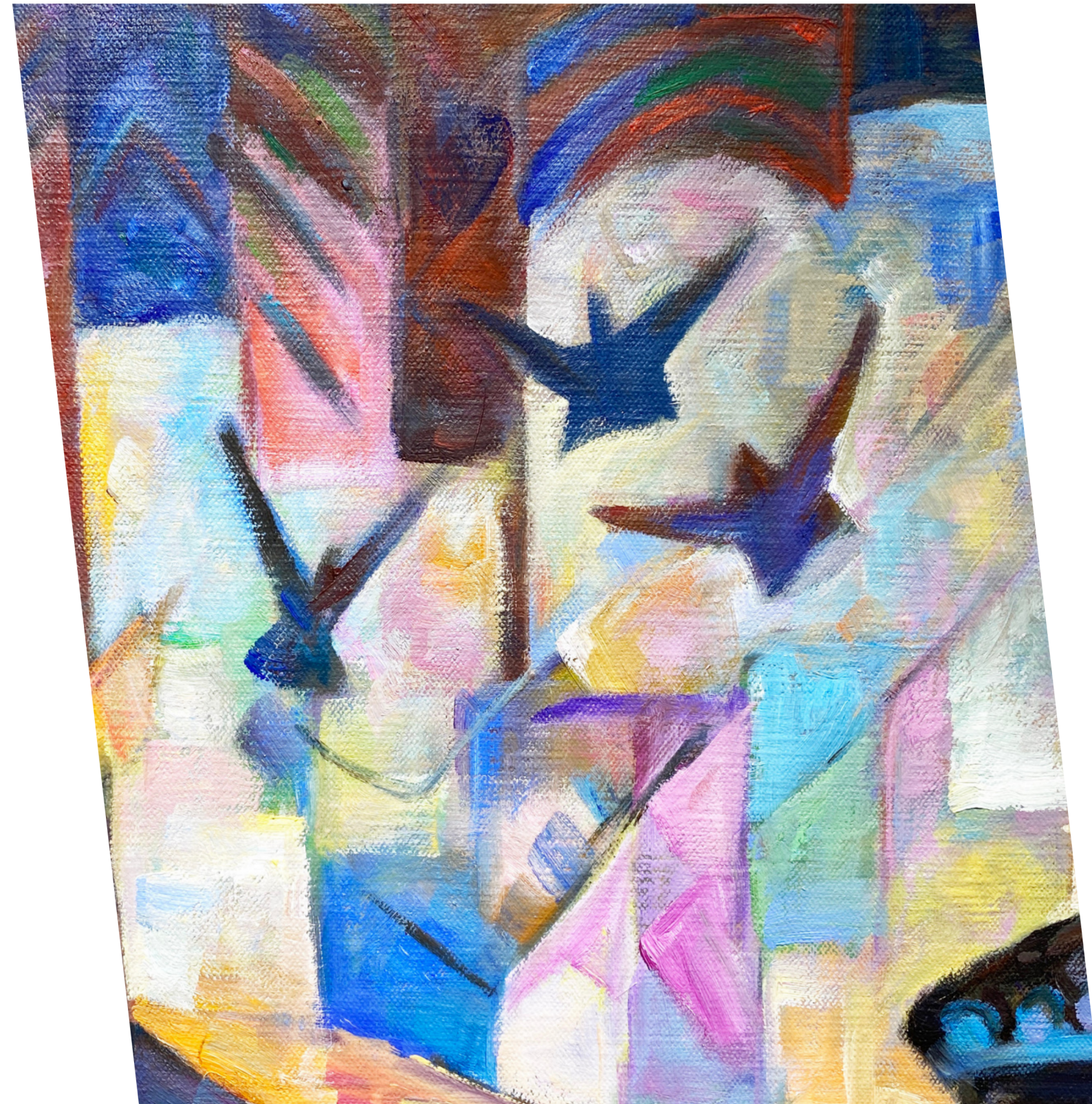
CHIANG SHIH WEN

江
石
文

C
D Y N A M I C S
T
Y

b. Malacca, Malaysia 1949

Chiang Shih Wen works are based on Malacca cityscape; however he features colours and airy of landscapes in his paintings instead in his paintings of realism landscapes. Before he starts a painting, he goes outdoor to draw some sketches and completes a paintings at his studio. His paintings are characterised by rigorous structures that form colour, shapes, composition and scale. His paintings create diverse views to observe historical and a tourist city tat bring viewer's attention back to the basic to appreciate peace and pleasure with ordinary life in Malaysia.



CHIANG SHIH WEN

江
石
文

C
D Y N A M I C S
T
Y

EDUCATION

1974 Fine Art, Collage of Art, Kuala Lumpur

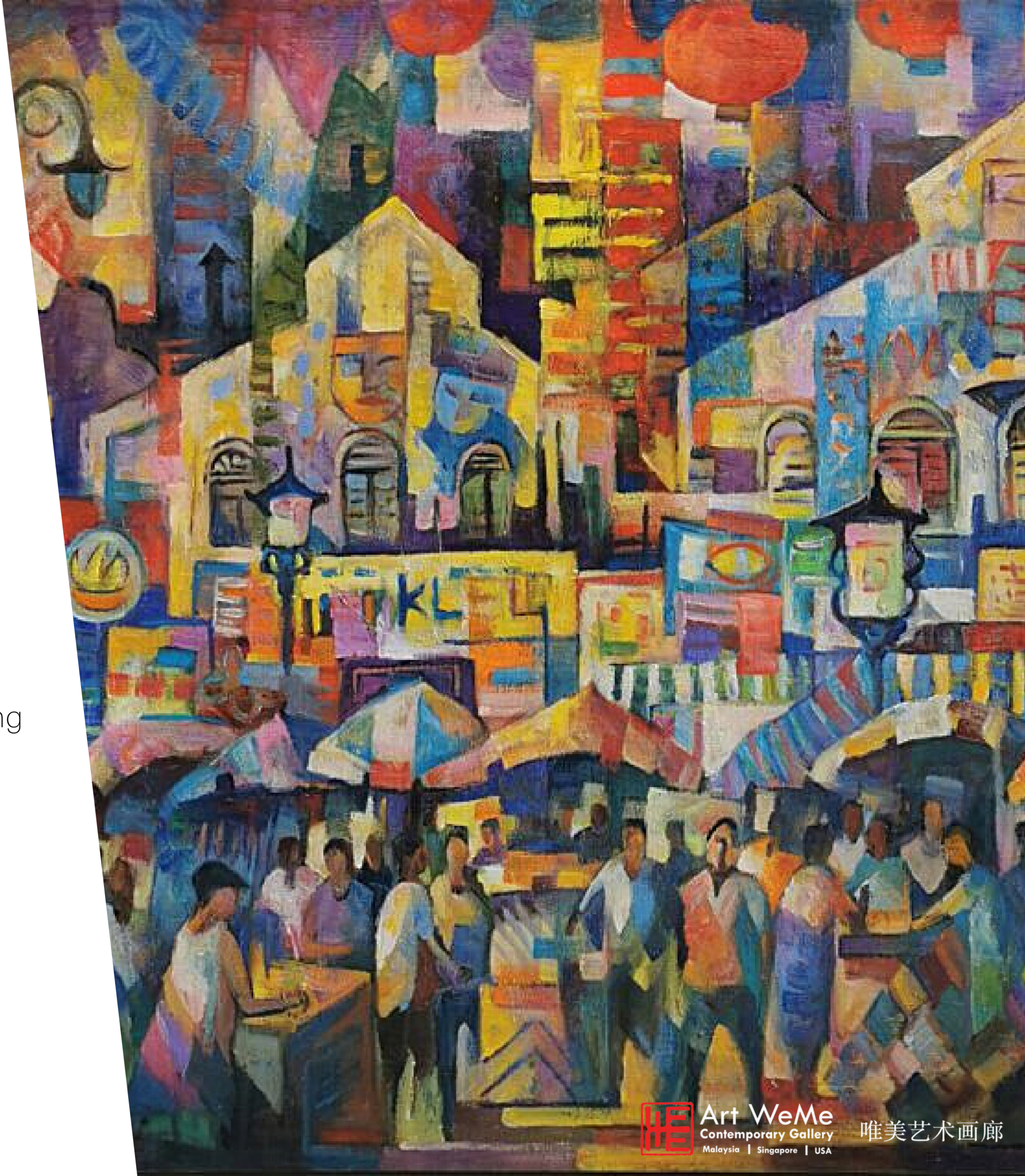
AWARDS

1981 Outstanding Award "Young Artist Competition", Nanyang Siang Pau

1982 "Malaysia Landscape in Watercolour", The National Art Gallery

GROUP EXHIBITION

2022 Art & Soul CIMB, Menara KEN TTDI



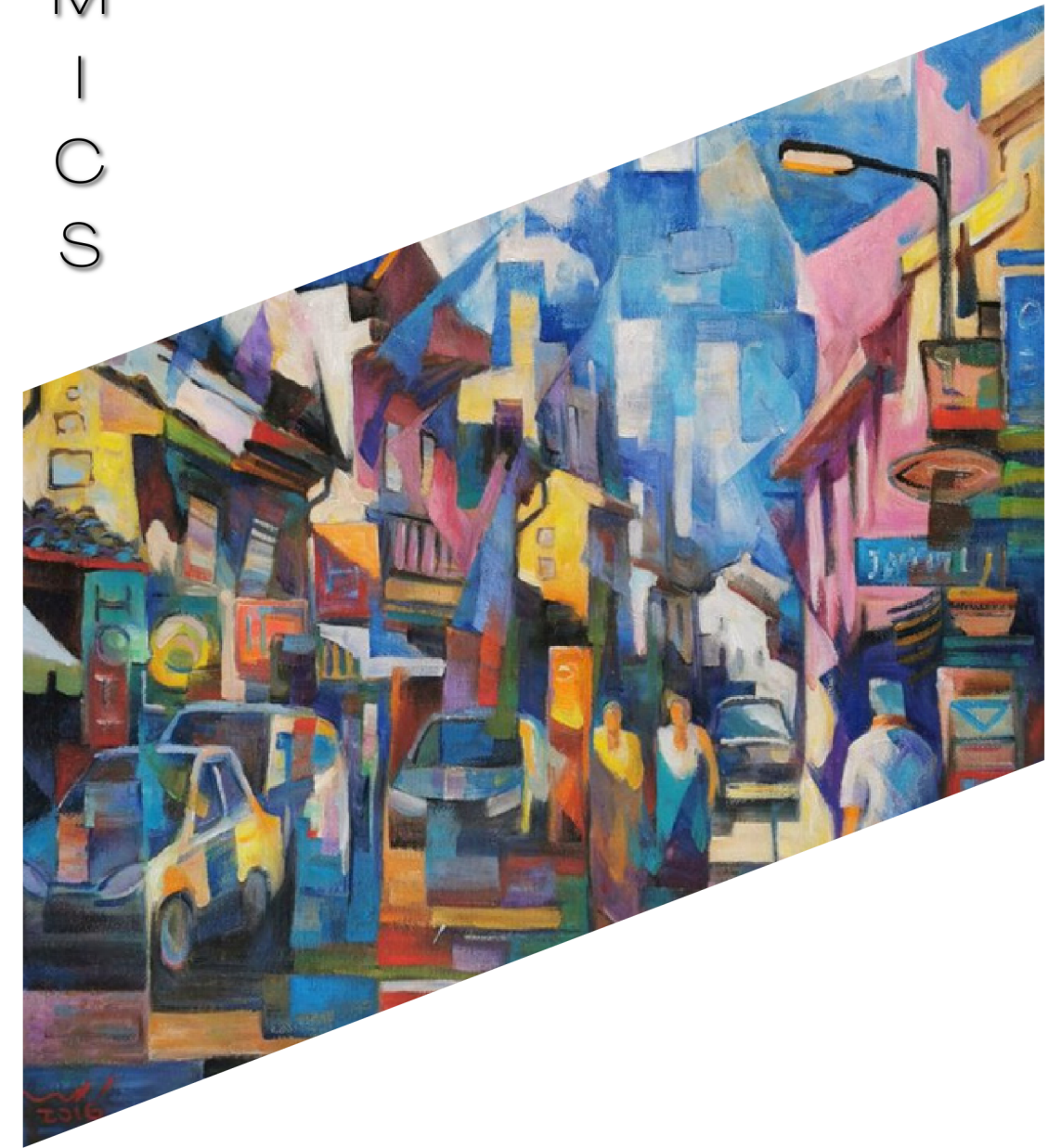
Art WeMe
Contemporary Gallery
Malaysia | Singapore | USA

唯美艺术画廊

江石文 CHIAN SHIH WEN CITY DYNAMICS

"City Dynamics" presents paintings from Malacca-born artist Chiang Shih Wen. His cityscape paintings show his passionate views of Malacca where provides creativities and energy in his art as well as the city itself.

Chiang Shih Wen, as a significant Malaysian artist, his has dedicated himself to dazzling his hometown and current living city, Malacca, by using his brushes. Malacca is not just a city of tourism, but a city is full of energy because of people and the nature of city itself. Chiang's paintings highlight vibrant perspective of the city as a result of sunlight and humanism. Sunlight shines roof tops of shops houses and crowded shoppers on the street. Nature scenes and artificial elements are overlapped and mixed together. They compose a complicated and fascinated rhapsody behind the growth of a historical city.





WORKS



Petaling Street, KL

81 x 81 cm | Oil on Canvas | 2010 - 2011

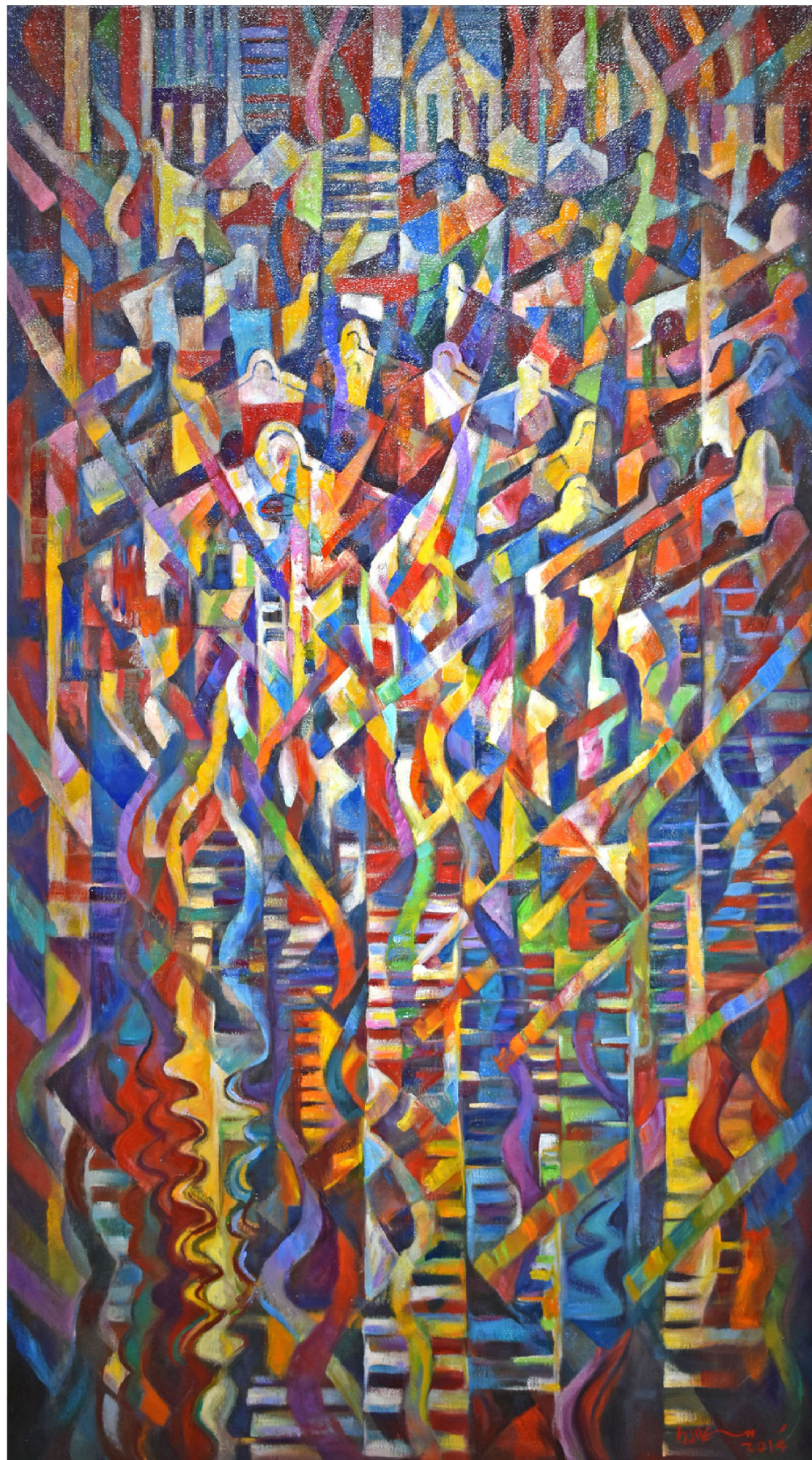
The painting features rows upon rows of hawkers selling street food at the Petaling Street in Kuala Lumpur. Petaling Street is one of famous tourist attraction where locates historical shophouses and street vendors sell local crafts and street food. Chiang illustrates one view of Petaling Street and tries to create a stage effect in this painting. He deliberately darkens two sides of the painting and highlights a crowd of street vendors and historical buildings behind. The contrast between light and shade creates a depth and dramatic visual interest in the painting.

Red House, Malacca

95 x 140 cm | Oil on Canvas | 2018

Light, historical buildings and rivers compose the most beautiful rhyme of Malacca. In this painting, Chiang captures reflection on the river as well as lights and shades on historical buildings at the Jonker Walk. Based on a solid foundation of academic techniques, Chiang expresses his feeling of Malacca, his hometown where breeds and inspires his creativities. His feeling of hometown brings his colours and lines to overlap infinite spaces in the painting.





Let The Music Play

153 x 85 cm | Oil on Canvas | 2014

Inspired by one music festival held in Malacca. The artist realises the rhythm of music is like sunlight creates constantly changing perspectives in architecture that brings a lot of vitality to the city. house roofs are stacked together with colour shapes just like the people who participate in the music festival have higher and higher mood. Music shines the city. Chiang creates a powerful and vibrant experience in this painting.

Morning Light, Malacca

100 x 122 cm | Oil on Canvas | 2022

Malaysian artist Chiang Shih Wen highlights Malacca cityscapes in bold and vivid colours that reveal energy of Malacca as a historical city. Chiang made many outdoor sketching before he started a painting. This process helped him to capture light and vibes. Morning Light, Malacca depicts the morning scene of a night market in Malacca. Houses are composed of different color blocks. Nature lights bring energy to the city in its most calm and quiet moment of a day. Without crowds and noises, the market is still shining under a warm sunshine because of its history and beautiful shophouses.





Colour In Love

152 x 204 cm | Acrylic on Canvas | 2012



Old Building, New Melody I

152 x 204 cm | Oil on Canvas | 2022



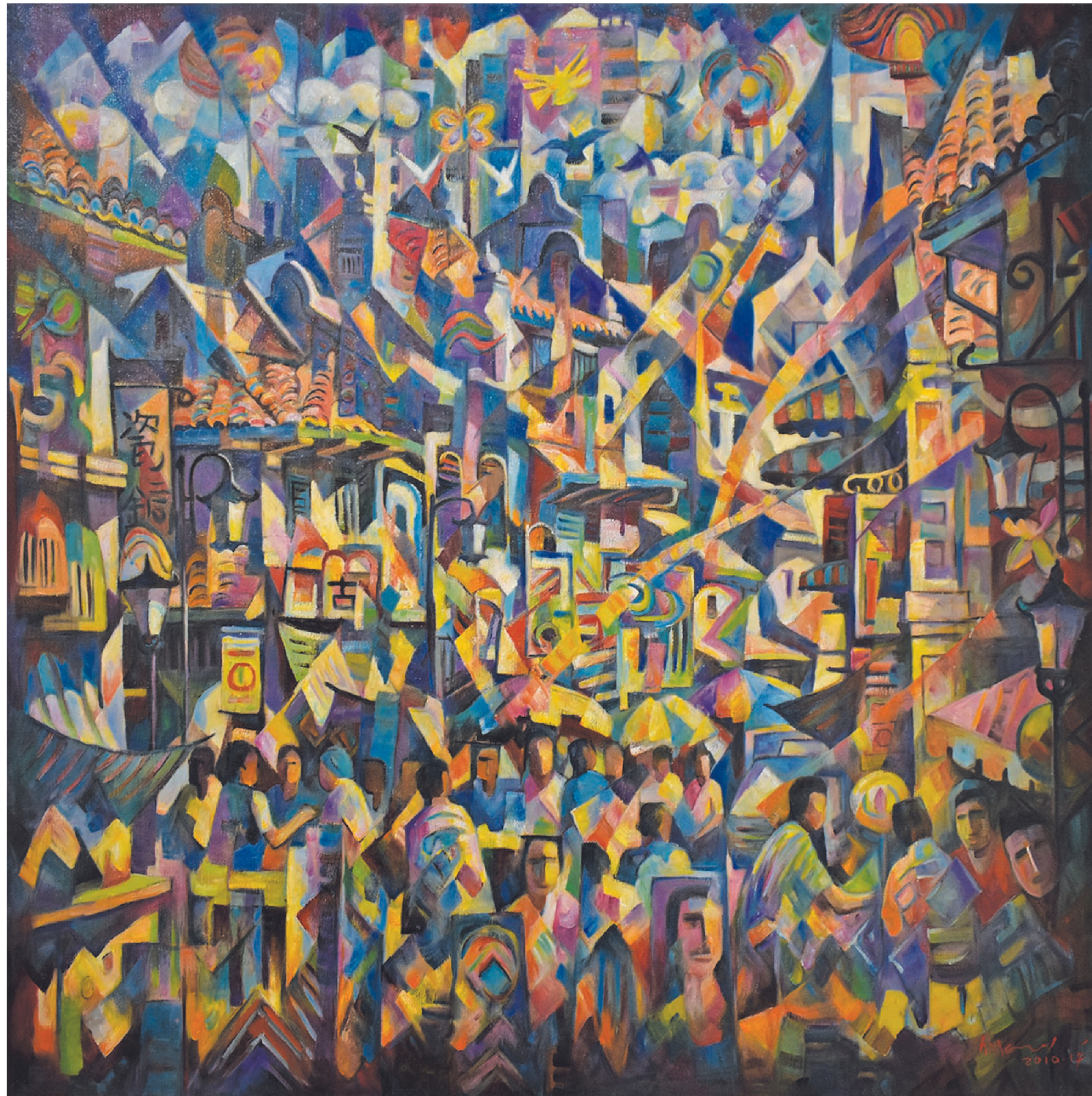
Art WeMe
Contemporary Gallery

唯美艺术画廊



Old Building, New Melody II

150 x 150 cm | Oil on Canvas | 2022



Fresh Air

150 x 150 cm | Oil on Canvas | 2010 - 2017



Art WeMe
Contemporary Gallery
唯美艺术画廊

Art WeMe Contemporary Gallery features established and mid-career international artist. Based in Kuala Lumpur (Malaysia) with a gallery in Carmel-By-The-Sea (California, United States) and a consulting office in Singapore.

Art WeMe believes art exploration is an amazing journey that is both personal and engaging. Once embarked, the exciting journey provides us a boundless media to individualise our personal value, accomplishment and success. It's our vision to introduce art that adds great dynamism to various spaces: personal, home, work, and social. Whether you are just beginning to buy art or looking to add to your existing collection, the gallery's exquisite artworks will intrigue your imagination and interest.

唯美藝術畫廊以知名和處於職業生涯中期的國際藝術家為特色。總部位於吉隆坡（馬來西亞），在 Carmel-By-The-Sea（美國加利福尼亞州）設有畫廊，在新加坡設有諮詢辦公室。

唯美相信藝術探索是一段既個人化又引人入勝的奇妙旅程。一旦啟程，激動人心的旅程為我們提供了一個無限的媒介來個性化我們的個人價值觀、成就和成功。我們的願景是引入藝術，為各種空間增添活力：個人、家庭、工作、社交。無論您是剛剛開始購買藝術品還是想增加現有收藏，畫廊的精美藝術品都會激發您的想像力和興趣。



Art WeMe
Contemporary Gallery

唯美艺术画廊



ARTSY



WEBSITE



FACEBOOK



INSTAGRAM

ART WEME CONTEMPORARY GALLERY

MALAYSIA

Lot 2.100.00 & 2.101.00

166 Jalan Bukit Bintang,

Pavilion Elite,

55100 Kuala Lumpur

Operation Hours

Daily from 10am - 9pm

Including weekends and public holidays



+6 (03) 2110 6822



www.info@artweme.com